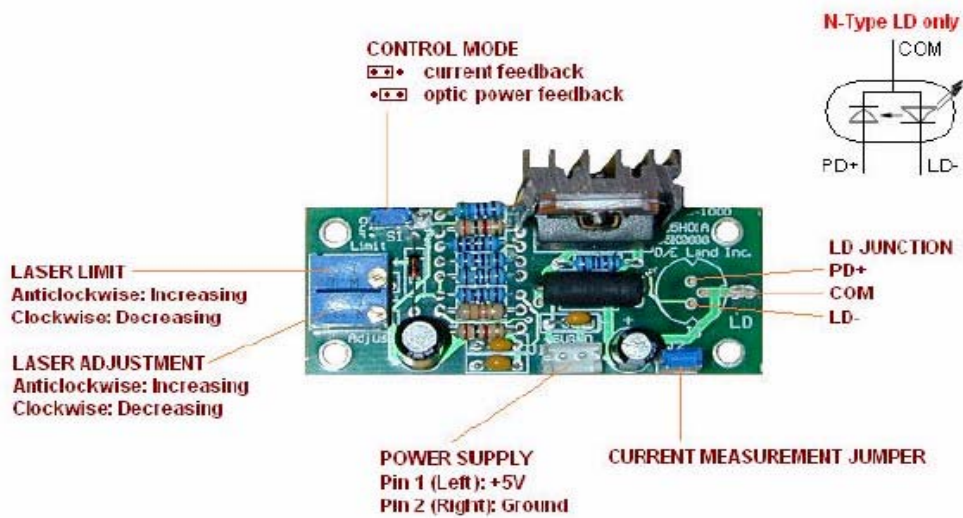


## OELDD-1000 Laser Diode Driver

OELDD-1000 Laser Diode Driver provides precise constant-current laser diode control. It is ideal to drive high power N-Type laser diode (LD) with or without photodiode. The driving current is up to 1000mA. User can choose current feedback PI loop or optic power feedback PI loop to monitor and control laser diode accurately.



### Features:

- For N-type laser diode
- Operates in constant current mode
- Adjustable up to 1000mA laser current
- 0.08% driving current accuracy
- Over current and slow start protection
- Two On-board 3-pin junctions for laser diode
- Single +5V power supply
- Wide operation temperature range

### Specifications:

Maximum laser diode driving current	1000mA
Driving current accuracy	0.08%
Driving current stability	0.3% or 0.2mA (After 1 minute starting)
Compatible voltage	0V to 4.0V
Photodiode current range	0.01mA to 4mA
Power supply	+5V
Operation Temperature	-40 ~ +75°C
Size	58mmX22mm