

1x64 Optical Fiber Switch

Description

The new multichannel optical fiber Switch from O/E Land Inc. provides channel selection between a single input and N output fibers. With model number **OEOFS-300**, the output channel number is customer specified and it can be 1x16, 1x32 up to 1x64. It comes with a turn-key solution with USB interface and software controlled operation via computer. This 1x64 optical switch can be OEM or bench top model.

The **OEOFS-300** is based on our advanced fiber optics technology which has good repeatability, low insertion loss, low cost and high performance. The operation wavelength can be any from 300nm to 2000nm.

Both multimode and single mode versions of this switch are available. They feature high level of performance required for multi-unit testing in R&D and in manufacturing environments. They are also highly suitable for applications in telecommunications, manufacturing, and test environments, because of their low IL and excellent repeatability. In addition to the many standard options available, we also customize switches to meet the customer's specific needs.



Figure 1. 1x32 Optical Fiber Switch (**OEOFS-300-32-1550nm**)

Features

- Up to 40 (or 64) channels
- Wavelength range from 300 – 2000 nm
- SM/MM or PM fibers
- Low insertion loss
- High reliability and repeatability
- USB interface
- Software controlled and programmable
- Turn-key solution

Applications

- System testing
- Research and development
- Fiber optic component testing and measurement
- Reconfiguration of large numbers of outputs with single input
- Network monitoring

Specifications*

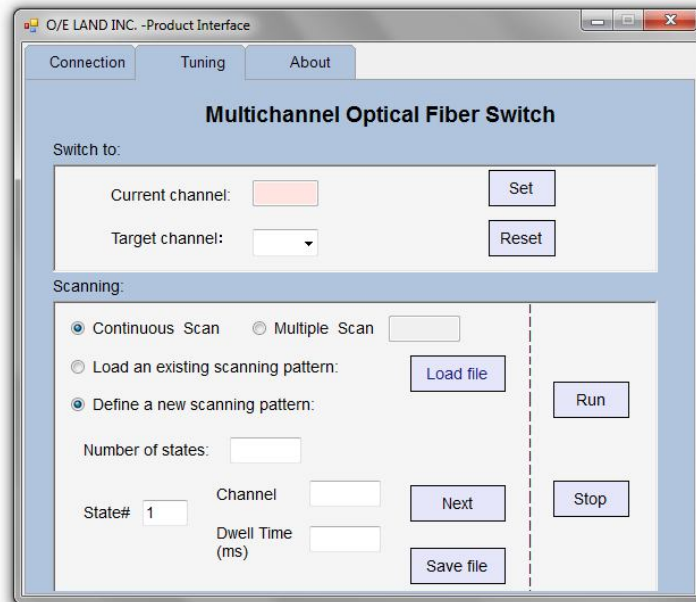
Switch type		1 input x N outputs
Output channel number (max)		64
Switch control		Programmable; Software controlled
Interface		USB
Connectivity		FC/PC; FC/APC; Fiber pigtail
Fibre type		SM/MM or PM
Cable Size	mm	0.9, 3 or receptacle
Operating wavelength	nm	Any between 400 - 2000
Insertion loss (IL)	dB	<0.8 for SM fiber
Return loss (RL)	dB	>25
Polarization dependent loss (PDL) SM	dB	0.1
IL stability	dB	±0.1
Repeatability	dB	
Sequential switching		±0.05
Random switching		±0.08
Isolation (maximum)	dB	- 50
Maximum input power (optical)	W	5 for MM fiber
Lifetime	cycles	50 million
Switching time (max)	ms	300
Operating temperature	°C	0 to 50
Storage temperature	°C	-40 to 70
Power supply		100 to 240 V, 50 to 60 Hz
Dimensions (W x H x D) (approx.)	mm	340x150x360 (bench top model)
Weight	kg	4.5

*All specifications are subject to change without notice.

Interface:

The software controlled version of the new optical switch comes with drivers and GUI for operating the unit. It provides flexibility for switching to the target channel, as well as scanning options to follow any

desired patterns. The scanning pattern including the sequence of channels and dwell time for each channel could be saved for easy loading.



Please feel free to contact us at (514) 334-4588 or at info@o-eland.com for more information on this product.